

For More Information
Visit

[http://www.transportation.
nebraska.gov/](http://www.transportation.nebraska.gov/)

[http://www.southsiouxcity.
org/departments/division.p
hp?fDD=13-125](http://www.southsiouxcity.org/departments/division.php?fDD=13-125)

[https://services.ne-
ltap.org/welcome.aspx](https://services.netap.org/welcome.aspx)

City of South Sioux City

125 E 26th St
South Sioux City
Nebraska
Phone: (402) 494-7573
Fax: (402) 494-7530
stormwater@southsiouxcity.org



City of South Sioux City

Construction best management practices





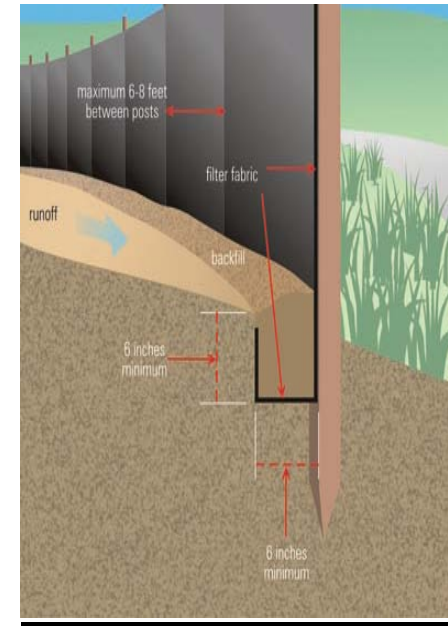
Concrete washout:

Concrete trucks should never be washed out in the street or to the storm sewer drain. There are several ways to insure that this does not happen. Make a concrete wash out pit and line it with plastic.



Inlet Protection:

Inlet protection is our last line of defense curb socks is a great way to protect our storm inlet and to insure minimal debris is in our storm sewers.



Silt Fence:

Silt fence is designed to pool water on the site while the sediment settles out of it.