



**MARCH 2025**

# CARDINAL Pride

## Tax Year 2025 Homestead Exemption.

FEB 3, 2025 (LINCOLN. NEB.) - The Nebraska Department of Revenue, Property Assessment Division (Department) reminds property owners that the Nebraska Homestead Exemption Application, Form 458, must be filed with their county assessor between February 2, 2025 and June 30, 2025.

The homestead exemption provides relief from property taxes by exempting all or a portion of the taxable value of the residence. The State of Nebraska reimburses counties and other governmental subdivisions for the property taxes lost due to homestead exemptions.

In Nebraska, a homestead exemption is available to the following groups of persons:

- Persons age 65 or older before January 1, 2025;
- Qualified disabled individuals; or
- Qualified disabled veterans and their surviving spouses.

Some categories are subject to household income and residence valuation limitations. The income limitations are on a sliding scale based on filing status and homestead exemption category.

Homestead exemption forms and information are available at

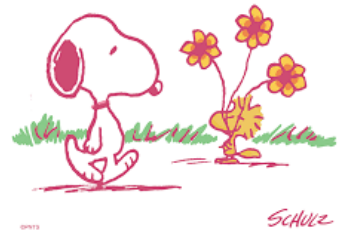
<https://revenue.nebraska.gov/PAD/homestead-exemption>.

For more information on the homestead exemption program, please contact your county assessor's office, or the Department at 888-475-5101.

ON THE **INSIDE**

- Volunteer of the month.
- Why it's Important To Plant The Right Tree In The Right Place.
- Youth Violence Prevention Week April 28-May 2, 2025
- Family Caregiver Tax Credit Application & Licensed Health Care Provider Certification for the Family Tax Credit Application.

*happy spring!*



## **MARCH 2025 PUBLIC MEETINGS**

### City Hall Council Chambers– 1615 1st Avenue

City Council Meeting*:	10th & 24th at 5:00 p.m.
Community Development Agency:	11th & 25th at 11:00 a.m.
Finance Committee*:	5th, 12th, 19th & 26th at Noon
Public Works Committee*:	3rd & 17th at 5:00p.m.
Design Commission:	6th & 20th at 8:30 a.m.
Planning & Zoning Commission:	12th & 26th at 4:00 p.m.

### Parks & Recreation Office – 1021 E 6<sup>th</sup> Street

Parks & Recreation Board: 3rd at 5:15 p.m.

### South Sioux City Library – 2121 Dakota Avenue

Library Board: 5th at 5:30 p.m.

\*Meetings are Broadcast Live on Cable One Channel 57  
Sparklight Channel 3 and live video streamed on city  
website [www.southsiouxcity.org](http://www.southsiouxcity.org)

## Swearing in of Fireman Richard Magana



## Swearing in of New Council Member

During the January 27, 2025 City Council Meeting Mayor Rod Koch appointed Yahaira Schultz as the new council member .



## Congratulations Officer Koinzan on 20 years of Service

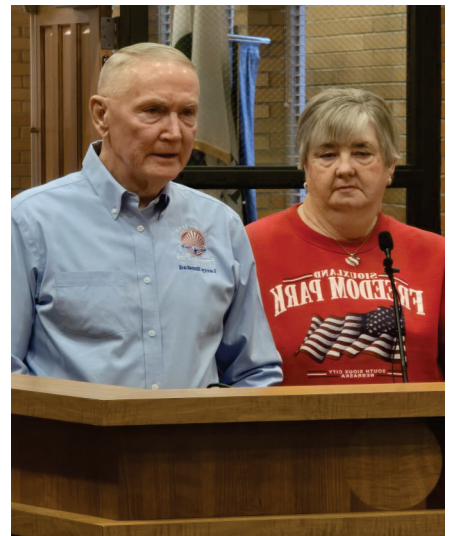


During City Council Meeting on January 27, 2025 Officer Koinzan was recognized for his 20 years service with the South Sioux City Police Department. On behalf of the community we would like to thank you for all that you do.

## VOULUNTEER'S OF THE MONTH



During City Council Meeting on February 10, 2025, Linda & Larry Brostad were presented with the community pride award.





# Why it's Important to Plant the Right Tree in the Right Place

<https://www.arborday.org/trees/treeGuide/TreeDetail.cfm?Itemid=874>

The decision to plant a tree is something that can provide you with a sense of accomplishment and something to admire for decades. However, it is not a decision that should be made without some careful consideration.

I've been working for the Arbor Day Foundation for more than a decade now and I have had several opportunities to plant small seedlings and watch them develop into young trees. This act gives me great joy and I love trees for all the great things that they provide. However, there have been a few instances where some thoughtful planning would have made me feel better about the locations I chose.

Planting a tree is a rewarding experience, so it is my hope that after reading this post you will find some helpful tips to help guide you to plant the best tree in the best location.

## **Why do you want to plant a tree?**

This is a serious question that you need to ask yourself, because it will determine what type of tree you are looking for. Some of the more common motivations for planting trees are to produce shade, add aesthetic value to your landscape, define a property boundary or provide a windbreak. Trees planted in locations that shade homes or block the prevailing winter winds can decrease the amount of energy that is consumed to heat and cool a home. Whichever option you choose selecting the right tree for this process can vary widely.

## **Temperature**

Before you decide to plant anything, I strongly recommend that you determine what hardiness zone you are in. Hardiness zone is an indication of your average annual minimum temperature and will help you in determining what species of trees, and plants will survive in your area. You can visit our hardiness zone map to look up your hardiness zone, and even find a list of trees that will work in your climate. We are in Zone 5 here

## **Species selection**

This is another important consideration to make. Just because a tree will grow in your hardiness zone, doesn't mean that you should plant it there. It would be a good idea to plant a species of tree that is native to your area. These are trees that have successfully survived where you live for thousands of years.

Visit the Tree Guide for help selecting the perfect tree.

## **Other environmental factors to consider**

Soil Structure and moisture requirements

The soil that a tree is planted in is very important and often overlooked. You can contact your local county extension office to have an analysis completed. This will help identify any issues that you may want to be aware of prior to planting a tree. The moisture requirements of tree are also an important consideration. Are you in an area that is experiencing drought? Is the planting site you are considering often wet for extended periods? These are important questions to ask yourself to make sure that you are selecting a tree that will be compatible with these environmental factors.

## **Pests/Disease**

Some trees are more prone than others to diseases and pests. Native trees have better disease and pest resistance, but how a tree is planted and the site that it is planted in can affect its overall health. Trees that become diseased are often attacked by insects (pests). This is because the disease weakens the tree's defenses, making it vulnerable to infestation by pests. Sometimes trees are cultivated to exploit specific traits. Sometimes you can find trees at your local nursery that are bred because they show a natural resistance to diseases or pests.

## **Tips to avoid utility lines**

One of the most tragic things that can be done to your new tree is planting it too close to utility lines. If the wrong tree is placed too close to a power line, that tree will endure a lifetime of corrective pruning and will end up looking disfigured and become more prone to disease and structural issues.

## **Overhead lines**

Here are some guidelines that are recommended for safe distances from overhead powerlines. Your utility company should have guidelines that they will share with you, but most seem to adhere to low, medium or tall classification for trees based on their mature height. Low zone (trees that will reach a mature height of 20ft or less) — plant 15 to 25 feet away from powerlines and 8 to 10 feet away from your home. Medium zone (trees that will reach a mature height of 35 feet) — plant 25 to 50 feet away from powerlines and 12 to 15 feet away from your home. Tall zone (trees that have a mature height of more than 35 feet) — plant at least 50 feet away from lines and 15-20 feet from your home.

## **What about underground lines?**

The biggest risk to interfering with underground lines exists at the time of planting. Never assume that your underground utilities are buried deep enough that you will not disturb them by digging. Please make sure to contact your utility or call 811 prior to plant trees on your property. It is also important to keep in mind that the root of your tree will spread out along the ground in all directions at a distance that is close to the mature height of your tree. This is important because the root system could be damaged if the line needs to be repaired

# YOUTH VIOLENCE PREVENTION WEEK

APRIL 28- May 2, 2025

Youth Violence involves young persons who are children, youths, and young adults that are between the ages of 10 and 24. The person can be an offender, victim, or a witness to the violence. The violence is various aggressive behaviors which may include, verbal abuse, bullying, slapping, hitting, and fist-fighting. Youth violence also includes serious violent acts such as rape, robbery, assault, and homicide committed by and against youth, which may cause injury or death. Further, youths who experience violence within a dating relationship is included in this definition. Dating violence is when one person in the relationship uses power and control over their partner. Dating violence includes physical, verbal, emotional, and sexual assault.

One form of youth violence which is talked about more is bullying. Bullying is quite common and can cause lasting harm to the victim(s). Bullying involves an **IMBALANCE OF POWER**-bullies use power to control or harm victim(s) and victim(s) could have a difficult time defending themselves; **INTENT TO CAUSE HARM**-the bully has a goal to harm the victim(s) and are not accidental; **REPETITION**-acts of bullying are directed toward the same person repeated-ly by the same bully or group of bullies. Bullying takes many forms which include verbal, social, physical, and cyber-bullying. The most common form is verbal bullying examples would be calling names, spreading rumors about the person, teasing, etc.

Many kids do not tell parents or adults/teachers at school if they are being bullied. Particularly boys and older children do not disclose to adults. They are reluctant to tell because they fear being retaliated against by the bully or adults will not take them seriously or deal with the situation inappropriately.

Most surveys conducted show that bullying occurs more likely on school grounds. The common locations where it's most likely to happen are bathrooms, cafeteria, hallways, playgrounds, and the classroom.

Possible warning signs to look for: **child complains of frequent headaches, stomachaches or feeling sick, has trouble sleeping, loss of appetite or change in eating habits, lost interest in school work or suddenly does poorly in school, has cuts, bruises or scratches that cannot be explained, arrives home with damaged, missing, torn clothing or books, shows to be anxious, depressed, sad, moody, or angry when at home, talks about suicide, afraid to go to school, walk to and from school, or ride the bus, avoids certain places, has fewer friends all of a sudden, or acts differently than usual.**

What you can do if you are being bullied. Walk away from the bully and do not respond to them. Tell an adult you trust about what happened. Find a safe place or somewhere you feel secure an office, the library, or a favorite teacher's classroom. Stick together in a group or people whom you trust. Don't be afraid to get help, seeing a counselor or therapist doesn't mean you have something wrong with you. Don't blame yourself and be proud of who you are.

If you would like to learn more about Youth Violence several websites can be accessed:

[www.cdc.gov](http://www.cdc.gov)  
[www.stopbullying.go](http://www.stopbullying.go)  
[v www.safeyouth.org](http://v www.safeyouth.org)  
[www.nationalsave.org](http://www.nationalsave.org)  
[www.nyvpw.org](http://www.nyvpw.org)

Article written by Dakota County Victim Assistance Program

The [Family Caregiver Tax Credit Application, Form 3165](#), and the [Licensed Health Care Provider Certification for the Family Caregiver Tax Credit Application, Form 3165C](#), are now available.

**For tax years beginning on or after January 1, 2025**, eligible family caregivers who provide care and support to an eligible family member and incur eligible expenditures during the taxable year may apply for this nonrefundable income tax credit. The credit equals 50% of the eligible expenditures incurred by the family caregiver during the taxable year, with a maximum credit of \$2,000, or \$3,000 if the eligible family member is a veteran or is diagnosed with dementia

- [https://revenue.nebraska.gov/sites/default/files/doc/tax-forms/taxcredit/f\\_3165c.pdf](https://revenue.nebraska.gov/sites/default/files/doc/tax-forms/taxcredit/f_3165c.pdf)
- [https://revenue.nebraska.gov/sites/default/files/doc/taxcredits/f\\_3165.pdf](https://revenue.nebraska.gov/sites/default/files/doc/taxcredits/f_3165.pdf)

# MARCH




## SOUTH SIOUX CITY PUBLIC LIBRARY ADULT EVENT CALENDAR



# 2025



2121 DAKOTA AVE. 402-494-7545

SUNDAY	MONDAY	TUESDAY	WEDNESDAY	THURSDAY	FRIDAY	SATURDAY
<b>ALL ADULT PROGRAMS ARE 16+ UNLESS OTHERWISE STATED PLEASE REGISTER FOR PROGRAMS ON OUR WEBSITE.</b>						1
2	3 <b>THE TEA ON IT:</b> 5PM-8PM	4 <b>TANGLED YARNS - 6PM</b> 	5 NE DEPARTMENT OF LABOR - 10AM-2PM <b>VOICES OF NATIVE AMERICAN WOMEN: "IRON EYES CHILDREN" - 6PM</b>	6	7 <b>GOODWILL OF THE GREAT PLAINS JOB ASSISTANCE - 1:30PM</b>	8
9	10 <b>COVER TO COVER</b> 3:30PM-4:30PM <b>THE TEA ON IT:</b> 5PM-8PM	11 <b>TANGLED YARNS - 6PM</b> <b>3-D SPRINGTIME - 11AM</b>	12 <b>NOODLES &amp; DOODLES - 6PM</b>	13 <b>DIGGING INTO YOUR IRISH HERITAGE - 6PM</b>	14	15
16	17 <b>THE TEA ON IT:</b> 5PM-8PM	18 <b>TANGLED YARNS - 6PM</b> 	19	20	21	22 <b>INGLES SIN ESTRÉS</b> - 2PM A 4PM
23	24 <b>COVER TO COVER</b> 3:30PM-4:30PM <b>THE TEA ON IT:</b> 5PM-8PM	25 <b>TANGLED YARNS - 6PM</b> 	26 <b>ENCUENTROS Y CUENTOS: BILINGUAL BOOK CLUB - 5:30PM</b>	27	28	29
30	31 <b>THE TEA ON IT</b> 5PM-8PM					



<<SCAN TO VIEW THE SSCPL EVENT CALENDAR ONLINE




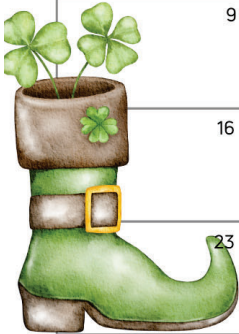
[HTTPS://LIBRARIES.NE.GOV/SOUTHSIOUXCITY](https://libraries.ne.gov/southsiouxcity)  
[PUBLICLIBRARY@SOUTHSIOUXCITY.ORG](mailto:PUBLICLIBRARY@SOUTHSIOUXCITY.ORG)

# MARCH

## CHILDREN'S EVENT CALENDAR

**ALL PROGRAMS ARE 30 MINUTES UNLESS STATED  
OTHERWISE.**

SUNDAY	MONDAY	TUESDAY	WEDNESDAY	THURSDAY	FRIDAY	SATURDAY
<b>Marching into March</b> 						1 <b>Seusapalooza</b> 10-4
2	3 <b>Money Smart Kids</b> 3:00 PM Lets Craft 4:30pm	4 <b>Toddler Time</b> 10:00am <b>TEEN TIME</b> 5:30PM	5 <b>TWEEN &amp; TEEN ANIME CLUB 3:45PM</b>	6 <b>DUNGEONS &amp; DONNA 4:00PM</b>	7 <b>Story Time</b> 11:00am <b>Tween Time</b> 3:45 pm	8 <b>Youth Book Club</b> <b>10:00 AM</b>
9	10 <b>Money Smart Kids</b> 3:00 PM Lets Craft 4:30pm	11 <b>Toddler Time</b> 10:00am <b>TEEN TIME</b> 5:30PM	12 <b>TWEEN &amp; TEEN ANIME CLUB 3:45PM</b>	13 <b>COLOR AND MUSIC</b> 5:00-7:30	14 <b>Story Time</b> 11:00am <b>Tween Time</b> 3:45 pm	15 <b>BINGO</b> <b>2:00</b>
16	17 <b>Money Smart Kids</b> 3:00 PM Lets Craft 4:30pm	18 <b>Toddler Time</b> 10:00am <b>TEEN TIME</b> 5:30PM	19 <b>TWEEN &amp; TEEN ANIME CLUB 3:45PM</b>	20 <b>DUNGEONS &amp; DONNA 4:00PM</b>	21 <b>Story Time</b> 11:00am <b>Tween Time</b> 3:45 pm	22 <b>Science Saturday</b> <b>10:00</b>
23	24 <b>Money Smart Kids</b> 3:00 PM Lets Craft 4:30pm	25 <b>Toddler Time</b> 10:00am <b>TEEN TIME</b> 5:30PM	26 <b>TWEEN &amp; TEEN ANIME CLUB 3:45PM</b>	27 <b>FREE FAMILY MOVIE 5:00PM</b>	28 <b>Story Time</b> 11:00am <b>Tween Time</b> 3:45 pm	29 <b>Game On</b> <b>All Day</b>
30	31 <b>Money Smart Kids</b> 3:00 PM Lets Craft 4:30pm					



\*PROGRAMS ARE SUBJECT TO CHANGE\*

SCAN TO VIEW THE SSCPL EVENT CALENDAR ONLINE>>

ANY QUESTIONS ABOUT THE PROGRAMS? EMAIL DONNA AT [DHABINCK@SOUTHSIOUXCITY.ORG](mailto:DHABINCK@SOUTHSIOUXCITY.ORG) OR CALL (402) 494-7545



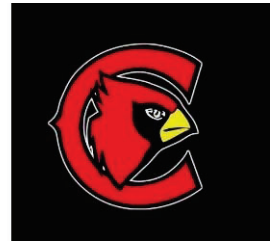




# SSC NEWSLETTER

SUPERINTENDENT OF SCHOOLS CORNER

by Dr. Rony Ortega



Dear SSC Community,

Thank you to the many community members who have participated in our Cardinal Vision Community Workshops and/or took the time to complete our recent survey about improving our schools. Your input is invaluable as we plan for the future of our schools and we're listening. We know you believe **that every child in our community deserves a safe school where they can learn and thrive (78% agree)** and **by improving our schools, we create a stronger, more united community for future generations (82% agree)**. We are very grateful for your trust and that you realize it is **time to address the very serious facility problems in our schools (80% agree)**. Your confidence means a great deal to us. The **Cardinal Vision** community group has been hard at work re-viewing the feedback from the five community workshops and the surveys and will present their findings and recommendations to the school board in late February.

On a personal note, I had my snowblowers tuned up at **Wilmes Do it Best Hardware** recently, and I have to give them a shout-out for their excellent service! While there, I ran into **Keith Goedken**, a former superstar teacher who now works at the store. Talk about a small-town connection—before I knew it, my snow blowers were back up and running! This was a great reminder of the importance of **shopping local and supporting our hometown businesses** whenever possible.

Thank you for your continued support of our schools and our community!

Dr. Rony Ortega, Superintendent  
South Sioux City Community School



Estimada comunidad de SSC,

Gracias a los numerosos miembros de la comunidad que han participado en nuestros talleres comunitarios Cardinal Vision y/o se han tomado el tiempo de completar nuestra reciente encuesta sobre cómo mejorar nuestras escuelas. Sus aportes son invaluable a medida que planificamos el futuro de nuestras escuelas y estamos escuchando. Sabemos que creen que **todos los niños de nuestra comunidad merecen una escuela segura donde puedan aprender y prosperar (78 % de acuerdo)** y que **al mejorar nuestras escuelas, creamos una comunidad más fuerte y unida para las generaciones futuras (82 % de acuerdo)**. Estamos muy agradecidos por su confianza y que se den cuenta de que **es hora de abordar los graves problemas de las instalaciones en nuestras escuelas (80 % de acuerdo)**. Su confianza significa mucho para nosotros. El grupo comunitario **Cardinal Vision** ha trabajado arduamente para revisar los comentarios de los cinco talleres comunitarios y las encuestas, y presentará sus hallazgos y recomendaciones a la mesa directiva escolar a finales de febrero.

En una nota personal, recientemente fui a **Wilmes Do it Best Hardware** para que pusieran a punto mis máquinas quitanieve o snowblowers y tengo que felicitarlos por su excelente servicio. Mientras estaba allí, me encontré con **Keith Goedken**, un ex maestro superestrella que ahora trabaja en la tienda.

¡Hablamos de una conexión con un pueblo pequeño! Antes de que me diera cuenta, ¡mis quitanieves estaban funcionando nuevamente! Esto fue un gran recordatorio de la importancia de **comprar localmente y apoyar a los negocios de nuestra ciudad** siempre que sea posible.

¡Gracias por su continuo apoyo a nuestras escuelas y nuestra comunidad!

Dr. Rony Ortega, Superintendente Distrito  
Escolar de South Sioux City

South Sioux City Community Schools

[www.scccardinals.org](http://www.scccardinals.org)

