

Where should I place carbon monoxide detectors in my home?

Since we are most vulnerable to the effects of carbon monoxide poisoning while we sleep, it is important to place alarms near your family's bedrooms. If you only have one CO alarm, place it as close to everyone's sleeping area as possible.



Ideally, you should have carbon monoxide detectors placed throughout your home, as you do smoke alarms. You should place a CO detector in each major area of your home: in the kitchen, in your living/dining room, in your bedrooms, and the office. If you have children or elderly family members living with you, provide extra protection near their rooms. If you live in a multi-story home, be sure to place at least one carbon monoxide detector on each level. They should be installed at knee level where we breathe, in a chair, or on a couch or sofa, or in our beds while sleeping.

If your furnace is located in the basement, be sure to place a CO detector there, as well. Likewise, if you have a gas clothes dryer, put an alarm in the laundry room. Place one in the garage, if you park your cars there. Wherever you have a solid fuel-fired appliance; HVAC, water heater – anything that could produce carbon monoxide – you should also have a CO alarm.

Your South Sioux City Fire Department recommends; if your home or business does not have a carbon monoxide detector, and there are gas appliances in use, Insulation of a Carbon Monoxide Detector is necessary. Because carbon monoxide cannot be seen or smelled, it is impossible to detect a carbon monoxide leak without a Carbon Monoxide Detector. These effective alarms will alert you when the concentration of CO in the air reaches a dangerous level. Carbon Monoxide Detectors are the single most effective way to prevent CO poisoning.



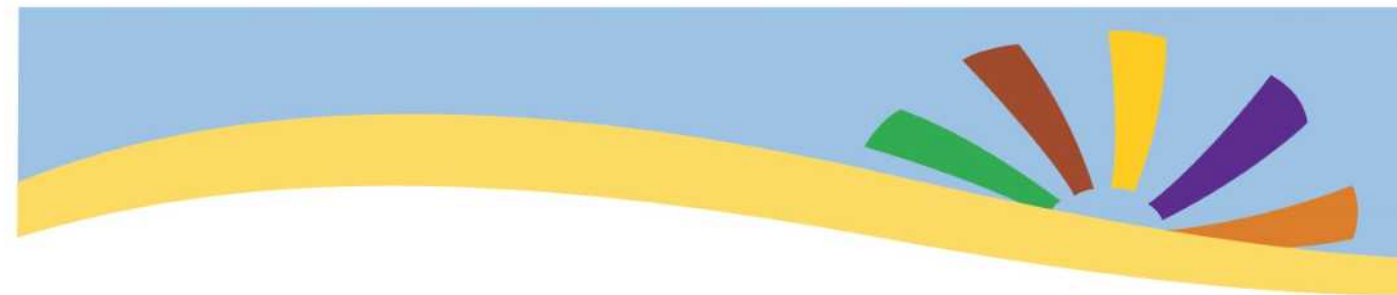
<div> <div>MARCH</div> <div> <div> <div>f</div> <div>Twitter</div> <div>Instagram</div> <div>YouTube</div> </div> </div> <div> <div>SOUTH SIOUX CITY PUBLIC LIBRARY</div> <div>2121 DAKOTA AVE.</div> <div>402-494-7545</div> </div> <div> <div>Public Library</div> <div>2023</div> </div> </div>						
SUNDAY	MONDAY	TUESDAY	WEDNESDAY	THURSDAY	FRIDAY	SATURDAY
	SCAN QR CODE FOR MORE INFORMATION ON THE PROGRAMS AVAILABLE	ALL PROGRAMS PROVIDED ARE FREE TO EVERYONE!	1 Tech Talks - 6:30pm	2 "How Do I...?": 3D Print - 6:30pm	3 Goodwill of the Great Plains Job Assistance 1:30pm	4
5	6	7 Tangled Yarns - 6pm	8 NE Department of Labor - 10am Simple Sewing - 5pm Tech Talks - 6:30pm	9	10	11
12	13 Cover to Cover 3pm-4pm	14 Tangled Yarns - 6pm	15 Tech Talks - 6:30pm "How Do I...?": 3D Print - 6:30pm	16 File Management Basics - 6pm	17	18
19	20	21 Financing Your Business - 12pm Tangled Yarns - 6pm	22 Tech Talks - 6:30pm	23 Watercolor Class: Painting Birds - 6pm	24	25 Used Book Sale - 1pm Computer Maintenance Basics - 11am
26	27 Cover to Cover 3pm-4pm Encuentros y Cuentos - 6:30pm	28 Tangled Yarns - 6pm	29 Tech Talks - 6:30pm	30	31	

[HTTPS://LIBRARIES.NE.GOV/SOUTHSIOUX CITY/](https://libraries.ne.gov/southsiouxcity/)



PUBLICLIBRARY@SOUTHSIOUXCITY.ORG

From the Superintendent's Office



Cardinal Preschool Registration

2023-2024 School Year

The Cardinal Preschool is located at E.N. Swett Elementary School. The South Sioux City Community School District is committed to providing a free preschool education to students who live in the community and have reached age 4 on or before July 31, 2023.

Early Registration until Friday, February 17th!

Please call or visit the registrar between 8:00am and 3:30pm Monday - Friday to get your child registered for Preschool.

The Student Registration / Registrar is located at:
School Administration Building (SAB)
 210 W. 39th Street
 South Sioux City, NE 68776

The Registration Staff will be at EN Swett Preschool (2300 C Street) during Parent Teacher Conferences from 1:00pm - 7:00pm on the following Dates specifically for Early Preschool Registration:

- **Wednesday, February 8th** 1pm-7pm at EN Swett Preschool (2300 C Street)
- **Thursday, February 9th** 1pm-7pm at EN Swett Preschool (2300 C Street)

For more information please call 402-412-2823 or [visit our district website at https://www.scccardinals.org/programsservices/student-services/registration/](https://www.scccardinals.org/programsservices/student-services/registration/)

Please bring the following with you:

- Birth Certificate (not the hospital copy)
- Immunization Record
- 2 Proofs of Address must contain parent/guardian's name (current lease or mortgage, utility bills, property tax)
- Proof of Parenthood/guardianship (Birth certificate matches photo ID, Adoption Records, Foster Parent Records, Education Guardianship form)



VISIT OUR SCHOOL WEB PAGE ONLINE AT:
[HTTP://WWW.SCCCARDINALS.ORG](http://www.scccardinals.org)



FEBRUARY 2023

CARDINAL Pride

South Sioux City Police Department's Citizen's Academy

Experience what it takes to be a police officer by participating in the South Sioux City Police Department's first ever Citizen's Academy. This program gives citizens an overview how police officers perform their duties and how the department serves the community. The classes will include Fire-arms, Taser, Defensive Tactics, DUI Enforcement, and Tactical Team Training among other topics.

A free t-shirt will be given to each participant. There will be awards, pictures and videos of their participation in the academy and meals will be provided.

Applicants must be 21 and over and will have to successfully pass a background check and will be willing to sign several waivers and confidentiality agreements before participation in this academy. The South Sioux City Police Department reserves the right to screen all applicants before they can be accepted into the academy.

If interested, applications to participate are located at www.southsiouxcity.org, City Hall or by calling Dori Koster (Administrative Assistant to the Chief of Police) at (402) 494-7553.



City offices will be closed on Monday February 20th in observance of Presidents Day



FEBRUARY PUBLIC MEETINGS

City Hall Council Chambers— 1615 1st Avenue	Parks & Recreation Office – 1021 E 6 th Street
City Council Meeting*: 13th & 27th at 5:00 p.m.	Parks & Recreation Board: 6th at 5:15 p.m.
Community Development Agency: 9th & 23rd at 11:00 a.m.	
Finance Committee*: 1st, 8th, 15th & 22nd at Noon	South Sioux City Library – 2121 Dakota Avenue
Public Works Committee*: 6th & 21st at 5:00p.m.	Library Board: 1st at 5:30 p.m.
Design Commission: 2nd & 16th at 8:30 a.m.	
Planning & Zoning Commission: 8th & 22nd at 4:00 p.m.	

*Meetings are Broadcast Live on Cable One Channel 57 Sparklight Channel 3 and live video streamed on city website www.southsiouxcity.org

Tree Topping – 4 Reasons Why You Should NOT Top Trees



TIMMY'S TREE SERVICE

Topping trees is an overused, crude pruning strategy where the Arborist cuts all the major branches such that blunt ends are left without any secondary branches left to assume dominance. Topping is not an acceptable pruning method and should rarely or never be used. Yet, it is very common among inexperienced tree services. Topping trees not only diminishes the tree's overall aesthetics but has serious negative repercussions for the tree's structural integrity. Here are four reasons why topping hurts trees and should be avoided.

Counter Productive

Topping is often requested from the homeowner or recommended by an inexperienced tree care professional to 'reduce the risk of tall, mature trees.' However, this pruning strategy is counterproductive because most mature trees have extensive root systems that are adequately equipped to maintain stability.

Structural Failure

The sudden removal of copious amounts of foliage puts stress on the tree's ability to provide itself with enough sustenance for the roots, branches, and trunk. Topping dramatically reduces the number of leaves on the tree, thus limiting how much energy the tree can produce and how much water it can release. Both are extremely important to the health of the tree. For example, Elm (Ulmus) trees absorb up to 250-300 gallons of water daily. If you were to top an Elm tree, you would only increase the likelihood of branch failure since it would not be able to release enough water to keep the limbs at a stable weight.

Disease & Decay

Topping usually results in improper cuts that do not heal properly. Proper cuts allow for the tree to heal itself naturally in a process called compartmentalization. This is when the tree forms protective layers over the decaying or wounded area, such as a pruning cut. However, when a tree is topped, it does not allow for this natural healing process to take place. Thus, it allows disease and **decay** to enter the tree just like an open wound on a person's skin allows bacteria to enter the body.

Higher Cost to Maintain

Topping encourages water sprout growth at three times the tree's expected growth rate, thus creating a much more rigorous pruning schedule and contributing to the homeowner having to pay more to maintain the tree than if it was pruned properly. Each tree has a different growth rate, but generally, if trees are pruned properly, they will only need to be trimmed every 2-5 years under normal circumstances.

DATING VIOLENCE

February is designated as Teen Dating Violence Awareness Month. Dating violence may first emerge with name calling and teasing. However, this can lead to more serious violence of physical assaults and rape. 1 in 3 teens in the U.S. are victims of physical, sexual, emotional or verbal abuse from a dating partner.

DATING VIOLENCE is a pattern of behavior where one person uses threats of, or actually uses, physical, sexual, verbal, or emotional abuse to control his or her dating partner.

PHYSICAL ABUSE- includes shoving, punching, slapping, pinching, kicking, hair pulling, strangulation, use of a weapon, and any other acts causing physical harm.

SEXUAL ABUSE- includes verbal sexual abuse, unwanted sexual touching and kissing, intimidation to force the victim to engage in any kind of sexual activity, and rape.

VERBAL/EMOTIONAL ABUSE- includes name-calling, threats, screaming, yelling, put-downs, ridiculing, criticizing, emotional blackmailing, and stalking.

Reporting dating violence among teens is a concern because of many factors. Some of the factors include, fear of any one believing them, fear of reporting crimes which happened when they were acting against their parents' wishes, and fear of retaliation or intimidation by the perpetrator or other teens. According to the National Center for Victims of Crime, both parents and teens seem to blame the victim by asking questions such as, "Why did you wear that outfit? Why were you drinking? Why did you go to that place?"

Some warning signs of abuse in dating relationships are:

1. Checking your cell phone or email without your permission.
2. Calling or texting you constantly to see who you are with, where you are at, or what you are doing.
3. Jealousy or insecurity.
4. Explosive temper.
5. Having to be with you ALL the time.
6. Isolating you from family and friends.
7. Erratic mood swings.
8. Threatening to hurt you, someone in your family, or himself or herself if you don't do what he or she wants.
9. Telling you what to do.

Most teens begin dating without having the knowledge of what constitutes a healthy relationship or what healthy boundaries are in a relationship. Teen dating violence programs can provide education to address these problems.

Prevention/Education programs- held before violence has occurred; seek to reduce teen violence, promote healthy relationships, and teach conflict resolution, critical thinking, and communication.

Counseling/Intervention programs- held after violence has occurred; seek to offer support to teen victims, helps change behavior and understanding of violence, and their capacity to solve problems without abusing others. These programs include group and individual counseling for the victims, perpetrators, or both.

To learn more about teen dating violence several websites can be accessed:

www.ncvc.org
www.loveisrespect.org
www.breakthecycle.org

NATIONAL DATING ABUSE HOTLINE: 24 hours a day at 1-866-331-9474 or
TEXT at loveis to 22522.

During a winter storm it is important to follow Snow Emergency Procedures and if you don't live on a snow emergency route move your vehicles off the streets so your vehicle doesn't end up like the picture below.

Please move your vehicles off the streets to assist the street department when plowing the snow on the streets.



Sidewalks

To ensure the safety of all South Sioux City Pedestrians it is required that:

All sidewalks within the business district be cleaned within 5 hours after the cessation of a storm, unless the storm, or fall of snow, has taken place during the night; in which case the sidewalk shall be cleaned before 8:30 a.m. the next morning.

Sidewalks within the residential areas MUST be cleaned within 12 hours after the cessation of any storm.

If a property owner fails to keep their sidewalks clean, the city will notify the property owner or post a sign on the property ordering the work done immediately and failure to comply with this order will constitute a misdemeanor. The city will then clean the sidewalk and the total expenses will be charged against the property as a special assessment for improvement or may be recovered by civil suit brought by the city against the owner or occupant of the property.



Cardinal Baseball and Cardinal Softball

Will be having their sign-up days at the South Sioux City, High School Commons located At 3301 G St.

Registration dates/times will be:

Sunday, January 29

Sunday, February 19

Times will be from:

4 p.m. - 6 p.m.

Applications can be found at the Scenic Park Campground Office in South Sioux City, NE or

www.southsiouxcity.org or www.sscardinals.org or they will be provided at each registration.

If you have any questions, please contact Nic McBride. 712-333-0364 or nicmcbride26@gmail.com

